

# The CJV150 series turns an idea into reality

High-quality printing and sharp, accurate cutting generate fresh, brilliant ideas.

## CJV150 Series

Inkjet printer/cutter with silver ink



### CJV150-75

Width: 0.8 m

Suitable for simple stickers and labels

Small-footprint CJV150-75 is suitable for stickers, labels, artistic posters, and point of sales materials.



### CJV150-107

Width: 1.1 m

Suitable for quick POPs and large-size posters

The CJV150-107 delivers a quick output while preserving product quality.



### CJV150-130

Width: 1.3 m

Suitable for variously sized signage and point-of-sale marketing materials

The wider but modestly-sized CJV150-130 meets variable design demands.



### CJV150-160

Width: 1.6 m

Suitable for cost effective production of large, high-quality signage and vehicle wrapping films

The CJV-150-160 has the widest working width among the models, and satisfies a wide range of market demands including quality and cost.

The newly developed software RIP with user-friendly operation and high functionality

## RasterLink 6

Web update function is supported

Supports the Web update function that has been well-received in RasterLinkPro5. Program update and profile download can be easily performed via internet.

It would mean nothing to provide high-performance software with a variety of useful functions if the software itself is too difficult and complicated to use... The newly developed RasterLink software was designed to be extremely user-friendly with this idea in mind. With a wide variety of newly added features, RIP software, software for people of all ages and backgrounds, now encompasses a perfect package with all of the features needed to reproduce beautiful full-color finishes in high definition with the easiest set of controls to use to navigate with!!

#### Specifications

Item	CJV150-75	CJV150-107	CJV150-130	CJV150-160
Print resolution	On-demand piezo head 360 dpi, 540 dpi, 720 dpi, 1080 dpi, 1440 dpi			
Maximum print width	800 mm (31.4 in)	1,090 mm (42.9 in)	1,361 mm (53.5 in)	1,610 mm (63.3 in)
Maximum media width	810 mm (31.8 in)	1,100 mm (43.3 in)	1,371 mm (53.9 in)	1,620 mm (63.7 in)
Ink	Type/Color	Eco-solvent ink SS21 (C, M, Y, K, Lc, Lm, Lk, Or, W, Si) ES3 (C, M, Y, K, Lc, Lm, W) BS3 (C, M, Y, K) only available in emerging countries	Eco-solvent ink SS21 (C, M, Y, K, Lc, Lm, Lk, Or, W, Si) ES3 (C, M, Y, K, Lc, Lm, W) BS3 (C, M, Y, K) only available in emerging countries	Water-based sublimation ink Sb53 (Bl, M, Y, K, DK, LBl, Lm) Sb54 (Bl, M, Y, K, LBl, Lm)
	Package size	SS21: 440 ml Ink cartridge/ 2 L Ink pack*1,2 ES3: 440 ml Ink cartridge*2 BS3: 600 ml Ink pack/ 2 L Ink pack*3		SS21: 440 ml Ink cartridge/2 L Ink pack*1,2 ES3: 440 ml Ink cartridge*2 BS3: 600 ml Ink pack/2 L Ink pack*3 Sb53: 440 ml Ink cartridge/2 L Ink pack*3 Sb54: 440 ml Ink cartridge/2 L Ink pack*3
	Circulation system MCT (Mimaki Circulation Technology) (Only applies to white and silver inks)			
Media thickness	1.0 mm or less			
Rolled media weight	40 kg (88 lb) or less			
Certifications	VCCI class A / FCC class A / ETL UL 60950 CE Marking (EMC, Low voltage, and Machinery directive) / CB RoHS / REACH and Energy Star / RCM			
Interface	USB 2.0, for E-mail notification function			
Power supply	Single-phase (AC 100-20V / AC 220-240V)			
Power consumption	100V: 1.44kW, 200V: 1.92kW			
Operational environment	Temperature: 20-30°C (68-86°F), Humidity: 35-65% Rh (Non condensing)			
Dimensions (W x D x H)	1,965 mm x 700 mm x 1,392 mm (77 in x 28 in x 55 in)	2,255 mm x 700 mm x 1,392 mm (89 in x 28 in x 55 in)	2,525 mm x 700 mm x 1,392 mm (99 in x 28 in x 55 in)	2,775 mm x 700 mm x 1,392 mm (109 in x 28 in x 55 in)
Weight	126 kg	142 kg	157 kg	168 kg

\*1: White and silver are provided in 220 ml Ink cartridge only.  
\*2: White is provided in 220 ml Ink cartridge only.  
\*3: Optional MBIS3 (Mimaki Bulk Ink System3) is required for using 2 L Ink pack.

#### Supplies

Item	Color	Item No.	Remarks	
SS21	Cyan	SPC-0501C	440 ml Ink cartridge	
	Magenta	SPC-0501M		
	Yellow	SPC-0501Y		
	Black	SPC-0501K		
	Light Cyan	SPC-0501LC		
	Light Magenta	SPC-0501LM		
	Orange	SPC-0501Or		
	Light Black	SPC-0501Lk		
	White	SPC-0504W-2		220 ml Ink cartridge
	Silver	SPC-0504Si		220 ml Ink cartridge
BS3	Cyan	SPC-0667C	600 ml Ink pack	
	Magenta	SPC-0667M		
	Yellow	SPC-0667Y		
	Black	SPC-0667K		
	Cyan	SPC-0693C		2,000 ml Ink pack
	Magenta	SPC-0693M		
	Yellow	SPC-0693Y		
	Black	SPC-0693K		

Item	Color	Item No.	Remarks	
Sb53	Blue	SB53-BL-44	440 ml Ink cartridge	
	Magenta	SB53-M-44		
	Yellow	SB53-Y-44		
	Black	SB53-K-44		
	Deep Black	SB53-DK-44		
	Light Blue	SB53-LBL-44		
	Light Magenta	SB53-LM-44		
	Blue	SB53-BL-2L		2,000 ml Ink pack
	Magenta	SB53-M-2L		
	Yellow	SB53-Y-2L		
Black	SB53-K-2L			
Deep Black	SB53-DK-2L			
Light Blue	SB53-LBL-2L			
Sb54	Light Magenta	SB53-LM-2L	440 ml Ink cartridge	
	Blue	SB54-BL-44		
	Magenta	SB54-MT-44		
	Yellow	SB54-YT-44		
	Black	SB54-KT-44		
	Light Blue	SB54-LBT-44		
	Light Magenta	SB54-LMT-44		
	Blue	SB54-BL-2L		2,000 ml Ink pack
	Magenta	SB54-MT-2L		
	Yellow	SB54-YT-2L		
Black	SB54-KT-2L			
Light Blue	SB54-LBT-2L			
Light Magenta	SB54-LMT-2L			

Some of the samples in this catalogue are artificial renderings. Specifications, design and dimensions stated in this catalogue may be subject to change without notice (for technical improvements, etc.). The corporate names and merchandise names written on this catalogue are the trademark or registered trademark of the respective corporations. Inkjet printers print using extremely fine dots, so colors may vary slightly after replacement of the printing heads. Also note that if using multiple printer units, colors could vary slightly from one unit to other unit due to slight individual differences.



Our factory is certified according to ISO14001:2004

**MIMAKI ENGINEERING CO., LTD.**  
2182-3 Shigeno-otsu, Tomi-city, Nagano 389-0512, Japan  
Tel: +81-268-78-2288  
trading@mimaki.jp www.mimaki.co.jp

**MIMAKI USA, INC.**  
150 Satellite Boulevard, suite A, Suwanee, Georgia 30024, U.S.A  
Atlanta +1-888-530-3988 Boston +1-888-530-3986  
Los Angeles +1-888-530-3987 Chicago +1-888-530-3985  
www.mimakiusa.com

**MIMAKI EUROPE B.V.**  
Stamerdijk 7E, 1112 AA Diemen, The Netherlands  
Tel: +31-20-4527-640  
info@mimaki-europe.com  
www.mimaki-europe.com @MimakiEurope

DB10331-03

For  
SIGN  
GRAPHICS

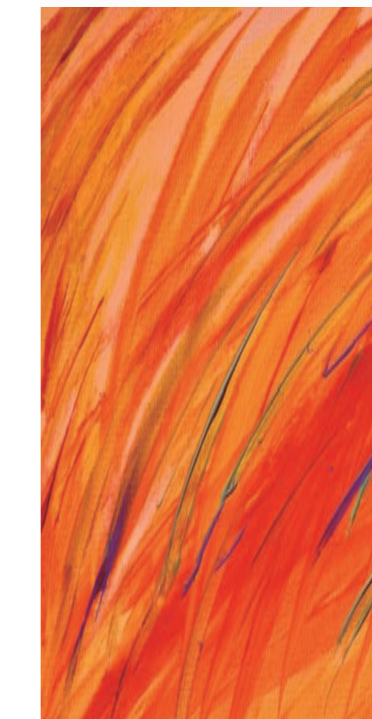
Inkjet printer/cutter with silver ink

## CJV150 Series

### CJV150-75/107/130/160



MIMAKI'S HIGH-SPECIFICATION ENTRY MODEL





# EXCEPTIONALLY BRILLIANT PRINTS

## Silver ink inspires imagination

Newly developed SS21 silver ink is available. Being 1.67\* times brighter than conventional silver inks, SS21 ink adds brilliant and beautiful mirror effects to print results.

\* Obtained from comparison measurements of SS21 and ES3 silver inks conducted at the Mimaki HQ.



Silver color added to catch copies and logos strikes a profound impression on the viewers, which makes silver printing very appealing.

The intensity of brightness in the silver ink varies as per the viewing angle. Such a high level of brightness attracts the viewer.

## Achieves a higher level of expression by using orange and light black inks

By using the orange ink as a process color, 94.8% of the PANTONE color chart is covered with approximate colors. Thanks to a wider gamut with the orange ink, food freshness can be simulated, and corporate colors can be faithfully represented. The light black ink improves the printed grayscale gradation. It also faithfully represents monochrome data without introducing unexpected color shifts. Light black ink ensures a more accurate color representation.

## The "Print and Cut" function immediately turns an idea into a real product

The multiple functions of the CJV150-75/107/130/160 models enable high-quality printing and high-accuracy cutting. The CJV150 alone completes the production of labels, stickers, and vehicle wrapping films.

### The continuous-register mark-detection function enables continuous media cutting.

The CJV150 automatically detects all register marks set by the RasterLink6 on the media, and cuts contour lines precisely by utilizing simultaneous automatic calibration.



### The over-cut and corner-cut functions ensure clearly cut edges with no residues.

The over-cut function ensures sharply cut edges with no residues by making a cross cut at the start and end positions of the contour cutting. The corner-cut function ensures sharply cut edges by making cross cuts at each corner.



### The clamp-pressure automatic-switching function enables continuous operation.

The pressure of the media clamps is automatically switched to a set value for printing and cutting. No pressure adjustment by the operator is required during continuous operation.

### The "Cut and Print" function improves the workability of thin materials.

This function prevents common problems, such as film separation and faulty cut results, by cutting the media before printing.

### The segment correction function facilitates precision cutting over longer-length prints.

This function detects intermediate register marks and enables four-point corrections for each segment to ensure accurate contour cutting over longer-length prints, even if the image is distorted.

### Print and cut on no-register mark media / Cut and print function

Media up to 1m in length do not require register marks. This function reduces the medium requirements.

### Versatile cutting methods satisfy a range of market demands.

"Normal cut" cuts the contour of printed image and holds the cut image on media. "Die cut" completely cuts the printed image from media. "Half cut" produces a unique perforated cutting, leaving a few connection points that retain the printed image on media. This function is useful for clipping images from media, and also used as crease lines.



# CAPTIVATING PRINTS

## Banding reduction

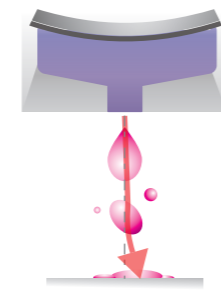
The reputable anti-banding function MAPS2 has been improved to MAPS3\*. Advanced MAPS3 scatters ink droplets and overlaps prints on areas of frequent banding.

\* MAPS3: Mimaki Advanced Pass System 3

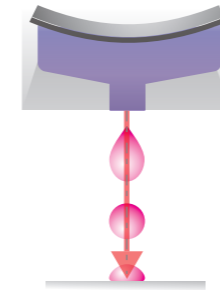
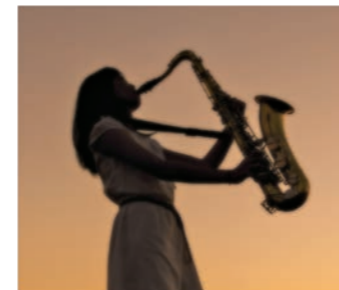


## Advanced ink jet technology ensures high-quality printing at all times

Mimaki's unique advanced ink jet technology allows the print head to jet each ink droplet at the appropriate jetting angle while retaining excellent ink droplet circularity. This advanced technology ensures that texts, lines, and edges are clearly printed.



Printing without waveform management

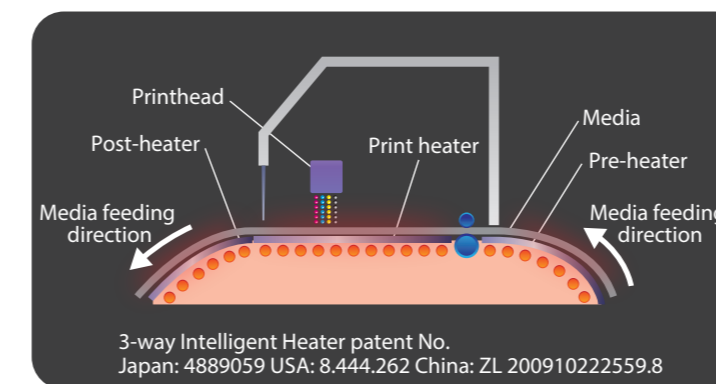


Printing with optimized waveform

## 3-Way intelligent heater

A 3-way intelligent heater fixes droplets placed on media. By using Mimaki's original technology in heating the media at a controlled temperature, ink can be fixed while maintaining high color development and high image quality. Thus the CJV150 provides both steady color development and easy handling after printing.

- Pre-heater: Heats media to the optimum temperature before printing.
- Print heater: Dries ink after it lands on media before it bleeds, improving color development.
- Post-heater: Enhances ink drying and achieves stable take-up.



## Smooth gradation printing

By ejecting 3 different dot sizes (Large/Medium/Small), images are expressed smoothly without graininess, even in large-format printing. Furthermore, the Large dot size is 35pl and by using this size effectively, light and shade can be expressed firmly while using higher printing speed settings.

# SIMPLE AND PRACTICAL FOR EVERYDAY USE

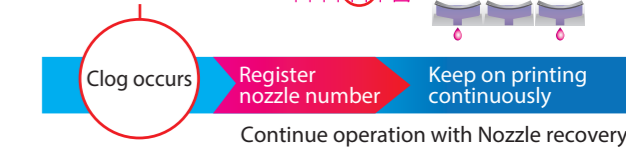
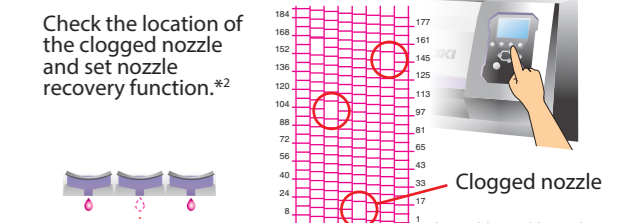
## Continuous operation support pack to minimize downtime

The CJV150-75/107/130/160 is prepared with the following continuous operation support pack to minimize downtime in case of emergency such as machine failure.

### Productivity maintenance - NRS\*1

The NRS substitutes defective nozzles with non-defective nozzles until the technician arrives. This feature enables uninterrupted print operations and continuous productivity.

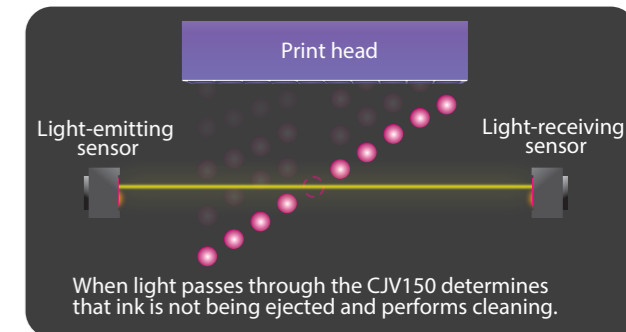
\*1 NRS: Nozzle Recovery System  
\*2 10 nozzles per nozzle row can be registered.



### Prevention of print quality problems - NCU\*

The CJV150 is equipped with Mimaki's original automatic NCU. Clogged nozzles are automatically detected and cleaned by the NCU. If the clogging is not resolved by cleaning, the CJV150 automatically sets the nozzle recovery function NRS and resumes printing. These functions significantly reduce the waste printing caused by clogged nozzles during a continuous printing run.

\* NCU: Nozzle Check Unit



### Stable printing using the ink circulation system - MCT\*

MCT is a standard feature included to effectively avoid the settling of white and silver pigments in the ink lines by regularly circulating the ink. It prevents print troubles and enables stable output from the start of operation. In addition, MCT contributes to reduction of ink waste, thereby supporting environmentally and economically friendly applications.

\* MCT is only available for white and silver inks. (MCT = Mimaki Circulation Technology)

